

The Personal Learning Device (PLD) Initiative

Briefing for Parents 5 Jan 2024

Mr Lau Jeng Sang HOD/ICT

A PRESENTATION BY
MINISTRY OF EDUCATION, SINGAPORE

The National Digital Literacy Programme and the PLD Initiative

An Overview

The National Digital Literacy Programme (NDLP)

1. The NDLP was launched in March 2020 to help students **strengthen their digital literacy and acquire digital skills** needed to navigate an increasingly digitalised world.
2. Under the NDLP, every secondary school student will **own a school-prescribed Personal Learning Device (PLD)**. Students may use funds from their Edusave Account to pay for the PLD.

Intended Outcomes of the PLD Initiative

The use of the PLD for teaching and learning aims to:



Support the Development of Digital Literacy



Support Self-Directed and Collaborative Learning



Enhance Teaching and Learning

Students' Experiences



Learning with a PLD

Deyi Secondary School

How will your child/ward use the PLD?

At Deyi Secondary School, your child/ward will be using the PLD for...

- Individual/Group work during classroom lessons
- Self-Directed Learning
- Collaborative Learning
- Blended Learning
- Project work

**Supporting Students in the Safe
and Effective Use of the Devices**

Cyber Wellness Concerns Identified by International Studies



Harmful Online Content

50% of Singaporean teenagers are exposed to cyber threats and 28% of them are exposed to violent content.

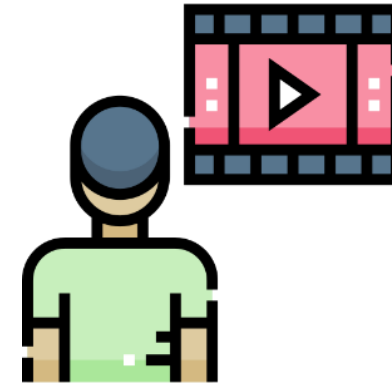
(COSI, 2020)



Distraction from Learning

72% of teens feel compelled to immediately respond to texts, social posts and notifications.

(Kimball & Cohen, 2019)



Excessive Screen Time

Teens who don't sleep enough report higher levels of depressive symptoms than well-rested peers (31% vs. 12%).

(Kimball & Cohen, 2019)

Supporting Students in the Safe and Effective Use of the Devices

The school has measures in place to enable a safer digital environment for learning with the use of PLDs, e.g.

- School rules on digital device use
- Classroom management and routines
- Cyber Wellness Education in CCE
- Partnering parents/guardians to support students in their use of technology for learning
- Device Management Application (DMA) to support a safer digital environment for learning

Classroom Management and Routines

Start of School Day

Students bring charged devices to school

Students turn on devices upon instruction

Students put devices on hibernation mode when not in use

Locking & Unlocking

Lock/ unlock before /after PE / recess in Form Class

Students bring devices to CCA venues for locking

After School

All students will bring devices home for charging

Cyber Wellness Education in CCE

Educating students on Cyber Wellness

MOE has made significant changes to the Character and Citizenship Education (CCE) curriculum. Cyber Wellness lessons will feature significantly in these lessons.

The broad topics covered in Cyber Wellness are:

- Cyber Use
- Cyber Identity
- Cyber Relationships
- Cyber Citizenship
- Cyber Ethics

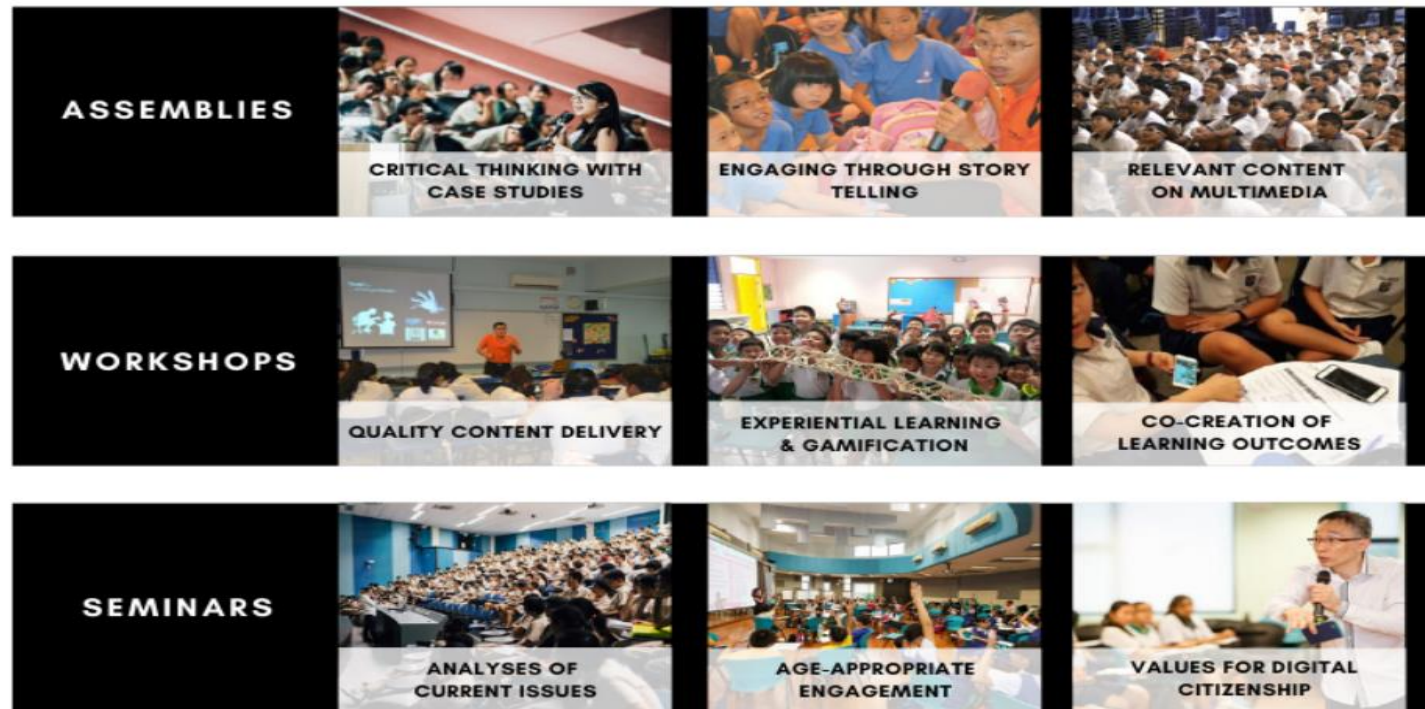
Cyber Wellness Education in CCE

Throughout their Secondary School education, students will learn about:

- Balanced use and self control
- Cyber bullying and Upstanding
- How to be a positive influence online
- How to handle online falsehoods
- How to manage social media (peer influence, emotions, echo chambers)
- Online relationship and Online safety (grooming, self disclosure)
- To respect intellectual property rights

Cyber Wellness Programmes

In addition to these lessons, through various programmes in school, students will continue to learn to be **respectful, safe, and responsible users of technology.**



Parents'/Guardians' Role

- We would like to partner parents/guardians so that that students are well supported in their use of technology for learning.
- As parents/guardians, you can help in the following ways:
 - Model good digital habits for your child/ward e.g. parents/guardians not using devices during family meals.
 - Know your child/ward well, and have conversations with your child/ward about safe and responsible use of technology.
 - Discuss and come up with ground rules for internet/device usage that both your child/ward and you can agree with.
 - Encourage your child/ward to use productivity tools using his/her PLD, to organise information and simplify tasks for efficiency.

Role of the DMA in Providing a Safer Digital Environment for Learning

DMA Installation

- Your child's/ward's PLD will be installed with a DMA to provide a safer digital environment for learning.
- DMA will be installed after the collection of the device. Students will be guided on the installation.
- The installation of DMA applies to both devices purchased through the school and any student-owned devices that parents/guardians opt for the student to use in lieu of the school-prescribed PLD.
- The DMA will be funded by MOE and will be uninstalled from the device when your child/ward graduates/leaves the school.

In-School DMA Settings (Default)

Schools will determine DMA settings for **in-school use**. As a default, these settings will continue to be in place after school as well:

- MOE and the school will set the level of web content filtering, including filtering out objectionable content or content that may not be conducive to teaching and learning (e.g. social media, pornography, gambling, or websites containing extremist content)
- Students will be able to use the device from **7 a.m. to 11 p.m.** daily
- The school will determine the apps and programs to be installed to support teaching and learning

Providing Parents/Guardians with Greater Choice of After-School DMA Parent Options

The following tables outline the different levels of restrictions, controls, and monitoring for the different DMA options after school hours.

Default	Option A	Option B
<p>In-school DMA settings will continue after school hours</p>	<p>Parents/Guardians can modify the DMA settings after school hours</p>	<p>Parents/Guardians can choose to disable DMA after school hours</p>
<p>For parents/guardians who want their child’s/ward’s use of the device to be restricted only to teaching and learning, and prefer to leave it to the school to decide on DMA settings after school hours.</p>	<p>For parents/guardians who want more leeway over the use of the device, and prefer to take charge of the level of restrictions for their child’s/ward’s use of the device after school hours.</p>	<p>For parents/guardians who do not want their child’s/ward’s use of the device to be regulated by DMA after school.</p>

- Having default school settings continue after school hours is the best option for parents/guardians who prefer not to, or do not feel ready to manage their child’s/ward’s device use on their own.
- Parents/guardians can request to change their choice of DMA settings at any time.

Providing Parents/Guardians with Greater Choice of After-School DMA Parent Options

	Default	Option A	Option B
Protecting students from objectionable content	MOE/school sets level of web content filtering	Parents/Guardians can apply additional content filtering	No content filtering
Reduce distractions from learning through control of applications	Parents/Guardians and students are <u>unable</u> to install additional applications	Parents/Guardians and/or students can install additional applications after school hours, but these applications are disabled during school hours	
Limit screen time	School sets hours during which students are able to use the device online	Parents/Guardians can modify the amount of screen time	No control over screen time

Providing Parents/Guardians with Greater Choice of After-School DMA Parent Options

	Default	Option A	Option B
Parent/guardian account	Provided to allow monitoring of PLD activities after school hours		Not provided
Monitor students' cyber activities	Parents/Guardians can track their child's/ward's browser history after school hours		Parents/Guardians will not be able to monitor or control their child's/ward's use of the device through the DMA after school hours No data* will be collected during use of PLD after school hours

*Parents/Guardians and students on Option B will need to use non-Chrome browsers to avoid web browsing history tracking and web content filtering. **[Only for Windows schools]**

Deciding on the Choice of After-School DMA Parent Option

Parents/guardians may wish to consider the following questions before deciding on which After-School DMA Parent Option is best for your child/ward.

1. Child's/ward's current device usage habits

- How much time does my child/ward spend on their device?
- How well is my child/ward able to regulate their device usage on their own?
- Does my child/ward get easily distracted while doing online learning?

2. Parents'/Guardians' involvement

- How confident and familiar am I with managing my child's/ward's cyber wellness?
- Are there existing routines and open conversations on the use of the Internet at home?
- Am I aware of how to prevent different types of cyber threats that my child/ward might face?

Data Collected by the DMA

The DMA does **NOT** collect any of the following data:

- Login IDs and passwords entered into websites or into any applications
- Actions performed (e.g. posts, online comments, items added to a shopping cart, etc.) when visiting websites and using apps
- Documents and photos stored in the PLDs
- PLD location
- Webcam videos and microphone recordings

Data Security

- All user data collected through the DMA will be stored in secure servers managed by appointed DMA Vendors with stringent access controls and audit trails implemented. The DMA solutions used are cloud-based Software-as-a-Service (SaaS) solutions and are trusted solutions that have been operating for many years. They have also been subject to regular security review and assessment by independent reviewers.

Data Security

- DMA solutions have sufficient security robustness to ensure data collected are properly stored and protected. MOE will also subject the DMA Vendors to regular audit on the security of the system based on tender requirements.
- To prevent unauthorised access, DMA Administrators and DMA Vendors will be required to access their accounts using 2-factor authentication or the equivalent to ensure proper accountability for information access and other activities performed. There will be regular account reviews and audits for DMA Administrators' and DMA Vendors' accounts.

Additional Resources for Parents

To support you in keeping your child/ward safe online, you may refer to these additional resources:

- Parent Handbooks (I) and (II) on Learning with a Personal Learning Device (shared by the school)
- Parent Kit on Cyber Wellness for Your Child (<https://go.gov.sg/moe-cyber-wellness>)
- Parent Kit on Raising a Digitally Smart Child (<https://go.gov.sg/moe-raising-a-digitally-smart-child>)
- Parenting with MOE: Instagram Live session on Raising Digitally Smart Kids (<https://go.gov.sg/iglive-raising-digitally-smart-kids>)
- Schoolbag article 'Keeping our teens safe online' (<https://www.schoolbag.edu.sg/story/keeping-our-teens-safe-online>)
- MOE Cyber Wellness Programme (<https://www.moe.gov.sg/education-in-sg/our-programmes/cyber-wellness>)
- Media Literacy Council's Resources for Parents (<https://go.gov.sg/better-internet-sg>)
- National Library's Learning & Information Literacy Resources (<https://sure.nlb.gov.sg/>)
- TOUCH Community Services (<https://help123.sg>)

Device and Funding Information

PLD Model 2024



*(Intel N100 Processor, 11.6” touch screen, 128 GB SSD, Windows 11, Weight 1.27 kg, **Stylus pen**)*

The school will be using the **Lenovo 300w Yoga Gen 4** for teaching and learning.

Total cost of the bundle includes 3-year warranty and 3-year insurance: **\$592.90***.

The school chose the device because of:

- **Portability**
- **Durability**
- **T&L Affordances**

** There may be a slight variation of price.*

PLD Bundle

Device Bundle includes

- Lenovo 300w Yoga Gen 4
- Insurance and Warranty
- Accessory : Inking Stylus

Your child's/ward's PLD will come with the **Enhanced Device Bundle** which includes*:

- 3-year warranty and 3-year insurance
- 2 repairs or 1 replacement claim

*The price of the PLD Bundle may appear to be higher than similar models on the retail market as the price of those devices usually does not include extended warranty and insurance coverage.

Insurance Coverage

The package includes a 3-year warranty and 3-year insurance* which includes:

Insurance Coverage	Claimable
<ul style="list-style-type: none">• Fire• Lightning• Power Surges• Accidental e.g water spillage, drop etc• Theft due to forcible entry• Robbery <p>* Accidental loss will not be covered by insurance.</p>	<p>*2 repairs or 1 replacement (3-year insurance)</p>

Technical Support for Students' Devices

Technical support will be provided to students through:

- Service Desk set up in school on a daily basis
 - Troubleshooting of device issues
 - Solve connectivity issues
 - Collection of devices to be sent for repairs
- AsiaPac Service Centre
 - Repair of devices (hardware issues)

Funding Information

Funding Support for Singapore Citizen (SC) Students

- **The cost of the device bundle can be paid using your child's/ward's Edusave account**, after setting aside provision for payment of miscellaneous fees.
- To ensure the affordability of devices, MOE has provided Edusave top-ups of \$200 in 2020 to 2022, and \$300 in 2023, to all eligible Singaporean students in primary and secondary schools.
- This is on top of the annual \$290 credited into the Edusave account for Secondary School students and \$230 for Primary School students.

Funding Support for Singapore Citizen (SC) Students

- For SC students who are on MOE Financial Assistance Scheme or whose family's monthly income meets the following criteria:

Gross Household Income (GHI) \leq \$3,000, or

Per Capita Income (PCI) \leq \$750

MOE will subsidise 50% of device bundle cost or \$350, whichever is lower.

- The remaining amount will be payable from the students' Edusave account. If there is insufficient balance in the students' Edusave account for the remaining amount, MOE will provide additional subsidy so that the cash out-of-pocket (OOP) is \$0.

Funding Scenario: Student A (SC)



**Lenovo 300w
Yoga Gen 4**

Student A (SC on MOE FAS) GHI ≤ \$3,000 or PCI ≤ \$750	
Device Bundle Cost	\$592.90
Student Subsidy	\$296.50 (rounded up to nearest 10 cents)
Available Edusave Balance <i>(After setting aside for misc fees)</i>	\$200.00 before deduction \$200.00 will be deducted
Additional Subsidy	\$96.40
Cash Out-of-pocket	\$0.00

For more details on financial assistance, please approach the school.
Each student would receive a personalised bill subsequently.

Funding Support for Singapore Citizen (SC) Students

- For SC students whose family's monthly income is:

$\$3,000 < \text{Gross Household Income (GHI)} \leq \$4,400$, or

$\$750 < \text{Per Capita Income (PCI)} \leq \$1,100$

MOE will subsidise 30% of device bundle cost or \$200, whichever is lower.

- The remaining amount will be payable from the students' Edusave account. If there is insufficient balance in the students' Edusave account for the remaining amount, MOE will provide additional subsidy so that the cash out-of-pocket (OOP) is not more than \$50.

Funding Scenario: Student B (SC)



Lenovo 300w
Yoga Gen 4

Student B (Non MOE-FAS SC from lower income family) \$3,000 < GHI ≤ \$4,400 or \$750 < PCI ≤ \$1,100	
Device Bundle Cost	\$592.90
Student Subsidy	\$177.90 (rounded up to nearest 10 cents)
Available Edusave Balance <i>(After setting aside for misc fees)</i>	\$200.00 before deduction \$200.00 will be deducted
Additional Subsidy	\$165.00
Cash Out-of-pocket	\$50.00

For more details on financial assistance, please approach the school.
Each student would receive a personalised bill subsequently.

Funding Support for Singapore Citizen (SC) Students

- SC students whose family's monthly Gross Household Income (GHI) > \$4,400 or monthly Per Capita Income (PCI) > \$1,100, no subsidy will be provided. Parents/Guardians can use their child's/ward's Edusave or cash to defray the device bundle cost.

Funding Scenario: Student C (SC)



Lenovo 300w
Yoga Gen 4

Student C (Not Eligible for Subsidy) GHI > \$4,400 or PCI > \$1,100	
Device Bundle Cost	\$592.90
Available Edusave Balance <i>(After setting aside for misc fees)</i>	\$200.00 before deduction \$200.00 will be deducted
Cash Out-of-pocket	\$392.90

For more details on financial assistance, please approach the school.
Each student would receive a personalised bill subsequently.

What's Next?

WHAT'S NEXT?

Parental Consent for Procurement



Parents with Singpass can access the **Parental Consent for the Purchase of Personal Learning Device (PLD)** via the following link:

<https://go.gov.sg/pdipadmin>

* Parents/Guardians without Singpass can request for the hardcopy letter via your child's/ward's form teacher.

For **Singapore Citizens (SC)** Students

Time Frame	Activity
5 th to 12 th Jan 2024	<p>Submit Parental Consent for the Purchase of Personal Learning Device (PLD) via the FormSG link on the previous slide.</p> <p>Parents without access to Singpass can submit their consent via hardcopy, which includes the following:</p> <ul style="list-style-type: none">• Intent to Purchase Personal Learning Device (PLD);• Standing Order for Use of Edusave Account; and• Authorisation Form. <p>Parents are strongly advised to purchase the PLD Bundle from the school AND to authorize your child to collect the PLD from school!</p>
Early March	Collection of devices by students

For Permanent Residents / International Students

Time Frame	Activity
5 th to 12 th Jan 2024	<p>Submit Parental Consent for the Purchase of Personal Learning Device (PLD) which includes the following:</p> <ul style="list-style-type: none">• Intent to Purchase Personal Learning Device (PLD);• Authorisation Letter <p>More info will be sent via PG</p> <p>Parents are strongly advised to purchase the PLD Bundle from the school AND to authorize your child to collect the PLD from school!</p>
January 2024	Parent/Guardian to make payment via Giro/PayNow
Early March	Collection of devices by students

Important Contacts / Helplines

To access / find out more about...	Contact / Helpline
This deck of slides	https://www.deyisec.moe.edu.sg/useful-links/useful-links-for-parents/
Edusave balance	6260 0777
Financial assistance	Approach General Office for any enquiries

Thank you





Ministry of Education
SINGAPORE